

Naresuan University

Annual Report 2025



Education Management

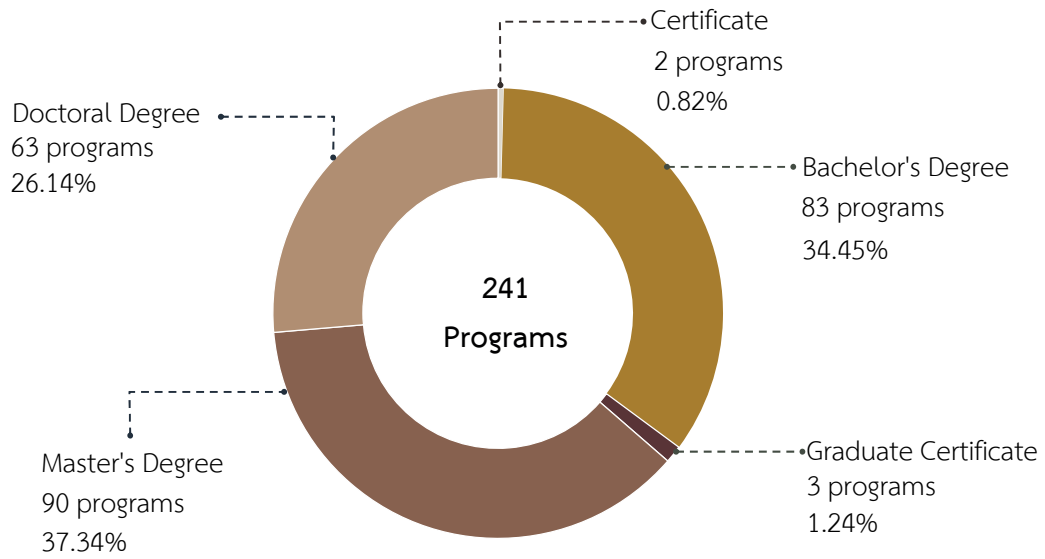
Naresuan University has defined its operational vision under the concept of “University for Entrepreneurial Society,” adopting the Quality Entrepreneurship Oriented Education strategy as the core framework for graduate development. The aim is to produce graduates with high professional competency and entrepreneurial skills capable of adapting to technological change and global dynamics, while elevating educational standards to an international level through academic collaboration with leading institutions worldwide.

In the academic year 2025, the university operated 241 programs across 20 teaching units, covering five levels of education, from certificate to doctoral degree. Graduate-level programs accounted for 65.13% of all programs. The teaching emphasized Active Learning and Outcome-Based Education (OBE). The university also promoted Lifelong Learning through certificate programs, a Credit Bank system, and non-degree short courses. Over 2,255 students participated in Cooperative and Work Integrated Education (CWIE) programs in collaboration with more than 1,367 organizations.

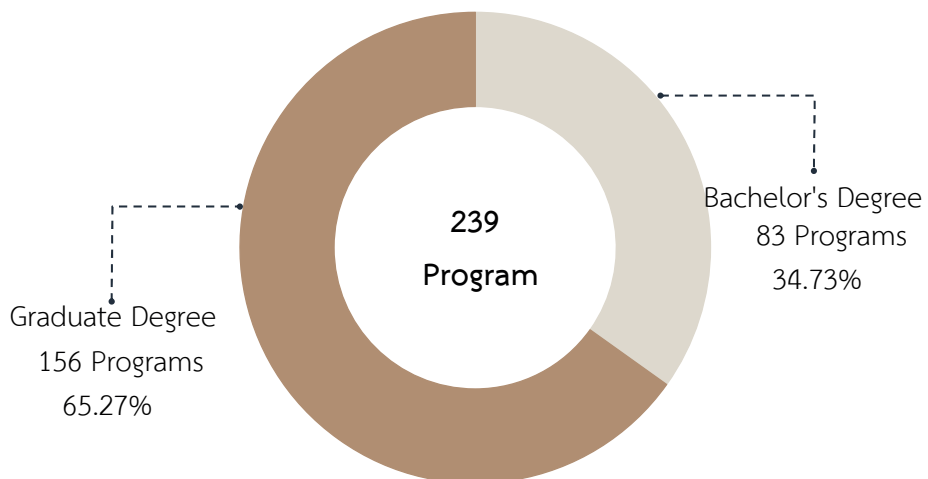
The university enrolled 7,373 new students, of whom 88.70% were undergraduate students. The total enrollment stood at 26,517 students, with the largest group in Humanities and Social Sciences (11,231 students), followed by Science and Technology, and Health Sciences respectively. In academic year 2024, 6,046 students graduated. A graduate employment survey for the class of 2023 showed that 74.73% were employed or self-employed within one year of graduation, and 77.98% worked in fields related to their degrees.

In terms of international cooperation, the university signed 18 MOUs/MOAs with foreign universities in the fiscal year 2025, with Japanese institutes as the primary partners. There were 230 international students enrolled. Students and staff received 92 national awards and 30 international awards during the academic year 2025, reflecting the quality of the university’s educational management.

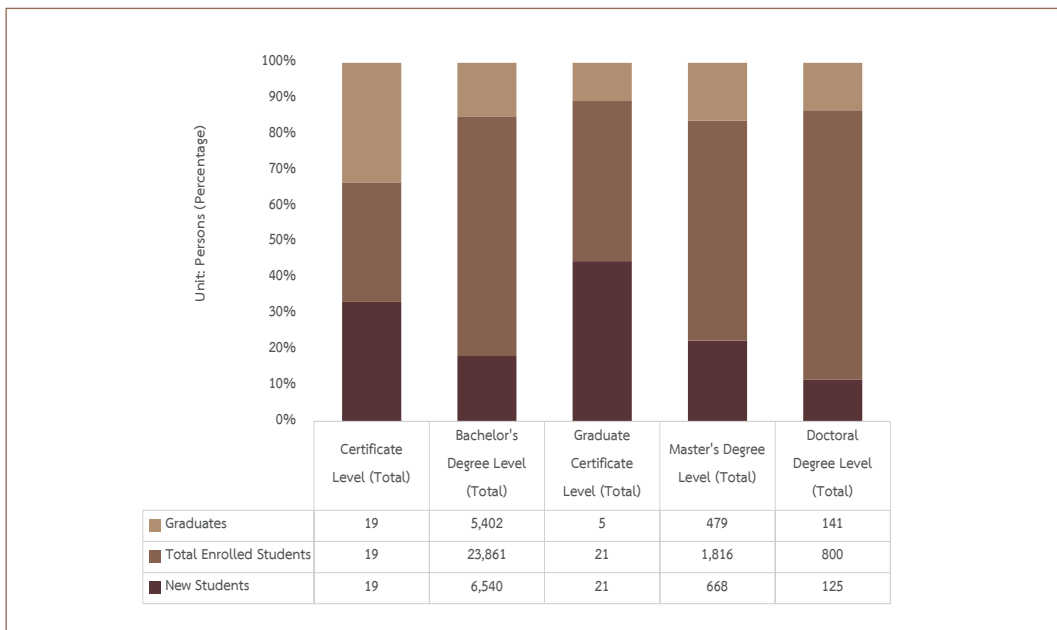
Total Programs in Academic Year 2025



Proportion of Graduate-Level Programs vs. Bachelor's Degree Programs in Academic Year 2025



Proportion of New Students, Total Enrolled Students, and Graduates, Classified by Level of Education

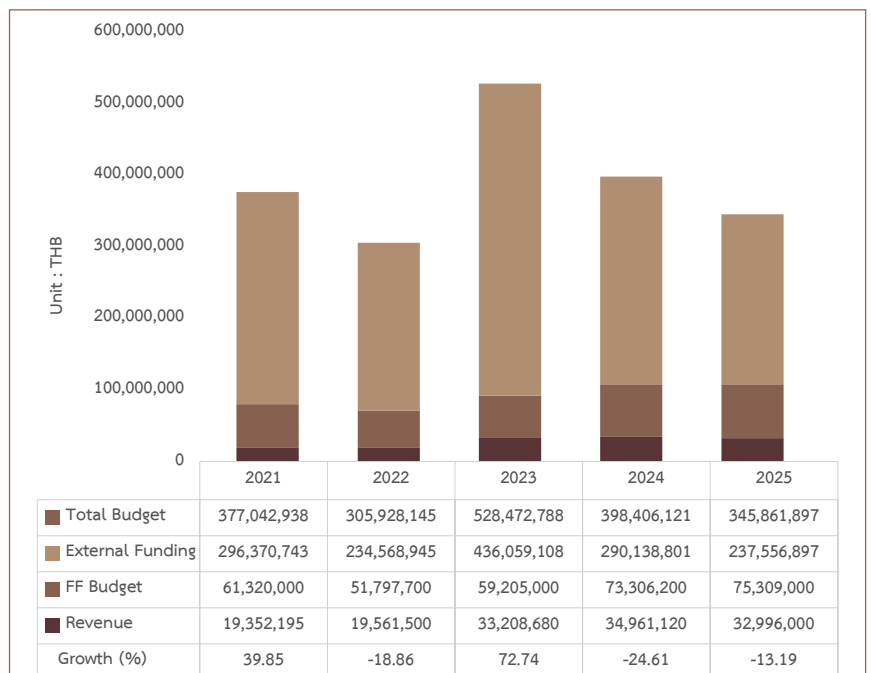


Research

As Global and Frontier Research University, Naresuan University positions research as a core mission, on par with teaching. The university has developed a robust Innovation Ecosystem through key mechanisms, including serving as the research network hub for the Lower Northern Region, building partnerships with leading research institutions

worldwide, developing a Mentoring System, promoting researcher exchanges, and emphasizing technology transfer from laboratories to commercial and community applications.

Research Funding (Fiscal Years 2021–2025, in THB)



Research Publications in National journals (Fiscal Years 2021–2025)

Articles	Year				
	2021	2022	2023	2024	2025
National journals (TCI)	564	613	810	759	570

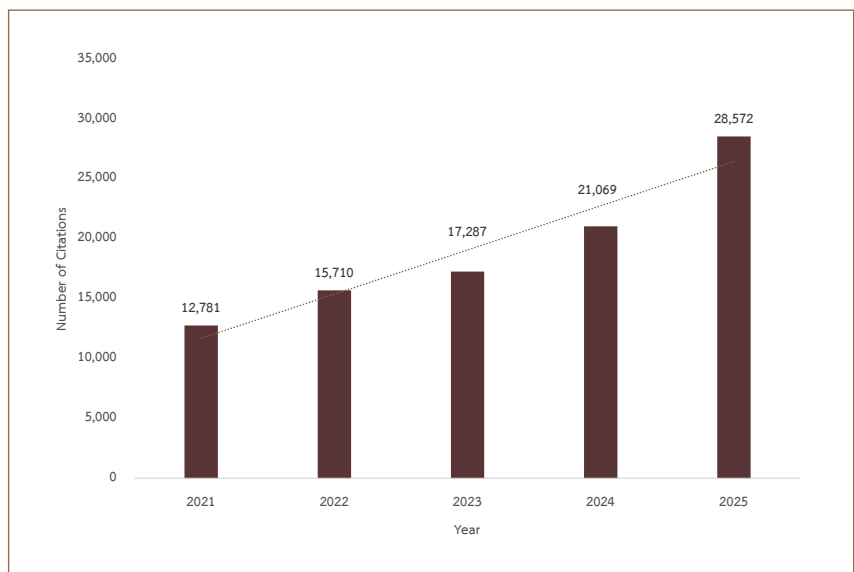
Notes: 1. Publication counts are based on the calendar year. Data as of January 7, 2026.
2. National journal rankings (TCI) are announced every February.

Research Publications in International journals (Fiscal Years 2021–2025)

Articles	Year				
	2021	2022	2023	2024	2025
International journal (Scopus)	598	601	661	701	889
Q1	205	248	264	310	437
Q2	151	139	128	146	204
Q3	116	95	161	116	127
Q4	79	83	62	76	91
Others	47	36	46	53	30

Notes: 1. Publication counts are based on the calendar year.
2. Source: Research and Innovation Division, as of January 7, 2026
3. Source: Data from SciVal, as of January 7, 2026

Number of Citations of Research Articles in the Scopus Database, 2021–2025

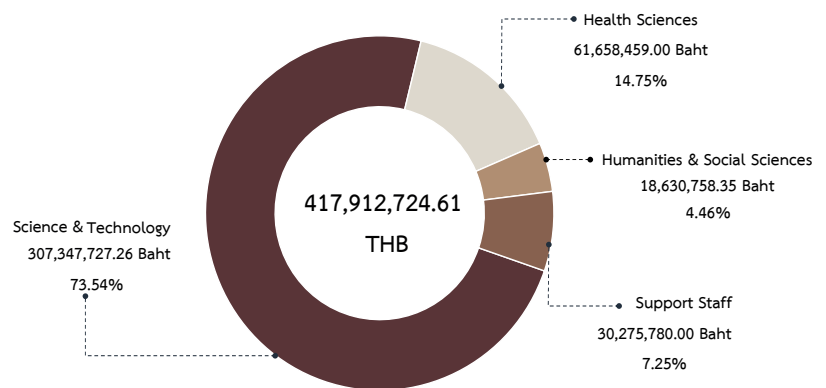


Academic Services to Society

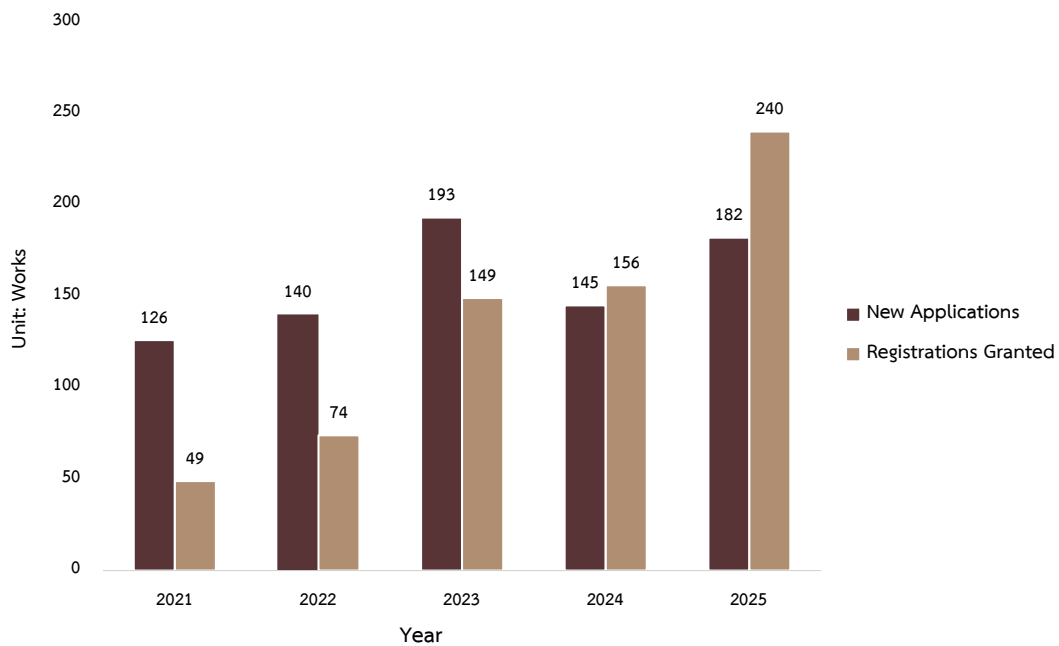
Naresuan University aims to strengthen academic service capacity, enhance regional competitiveness, and develop human resources for sustainable community development through training programs and academic networks. Research outputs are transferred to generate added value for communities both publicly and commercially.

Notable awards received include the Quality Democracy Innovation Award (10th Anniversary) for the “Pracha Khaochai” project, and the Healthy Organization Award 2024 for the Faculty of Medicine.

Academic Services to Society Budget Proportion for Fiscal Year 2025



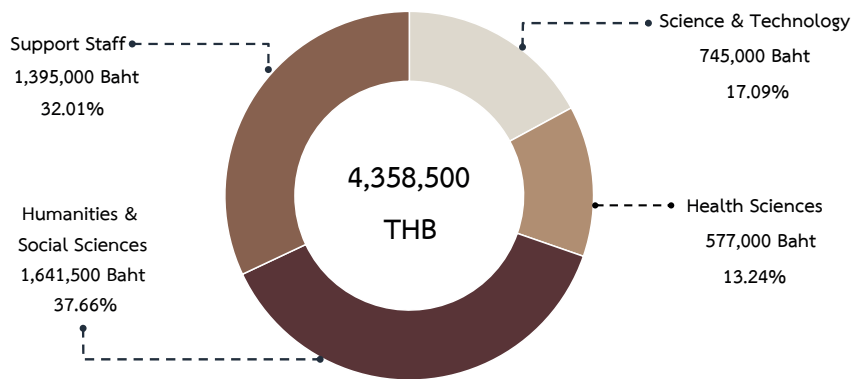
Intellectual Property Registrations (2021–2025)



Arts and Culture Preservation

Naresuan University promotes arts and culture by preserving, disseminating, and applying Thai and international cultural heritage through a “Cultural Ecosystem Service” approach. The university serves as the national center for arts and cultural academics, particularly in the Lower Northern Region, and manages systems to promote local wisdom to generate income, add value, and serve the public interest effectively.

Arts & Culture Budget – Fiscal Year 2025



Organizational Management

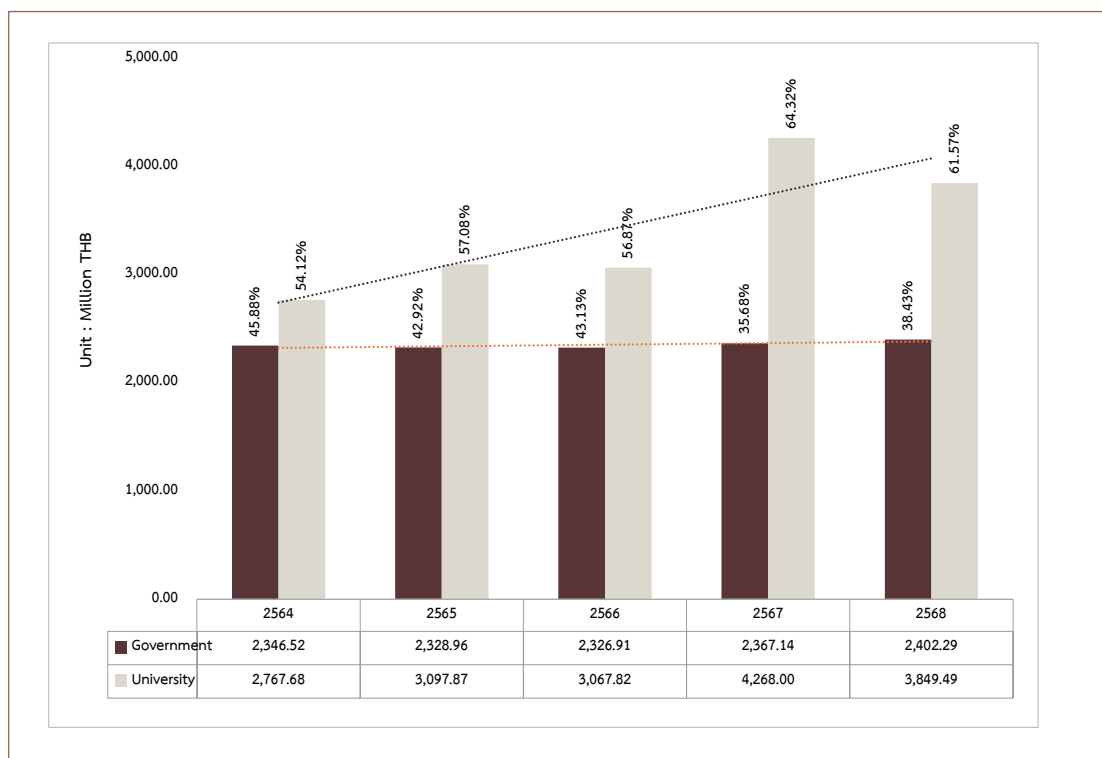
Budget and Finance

In the fiscal year 2025, Naresuan University received a total allocated budget of 6,251.7742 million THB, comprising 2,402.2871 million THB (38.43%) of Government budget and 3,849.4871 million THB (61.57%) of University revenue. The actual expenditure totaled 4,913.8364 million THB (78.60% of total allocation).

Category	Government budget		University revenue		Total	
	Allocated (M THB)	Spent (M THB)	Allocated (M THB)	Spent (M THB)	Allocated (M THB)	Spent (M THB)
Personnel	1,906.9077	1,906.8922	484.6723	470.2235	2,391.5800	2,377.1157
Operations	10.4591	10.4584	2,294.6947	1,739.2629	2,305.1538	1,749.7213
Capital Investment	252.3504	124.4565	320.8816	63.1778	573.2320	187.6343
Subsidies	232.5699	198.6184	749.2385	400.7467	981.8084	599.3651
Total	2,402.2871	2,240.425	3,849.4871	3,849.4871	6,251.7742	4,913.8364
%	38.43	93.26	61.57	69.45	100.00	78.60

Source: Overall Expenditure Budget Report, Fiscal Year 2025, Three-Dimensional Accounting System

Budget Proportion Allocated by the University for University Operations, Classified by Source of Funds, Fiscal Years 2021–2025

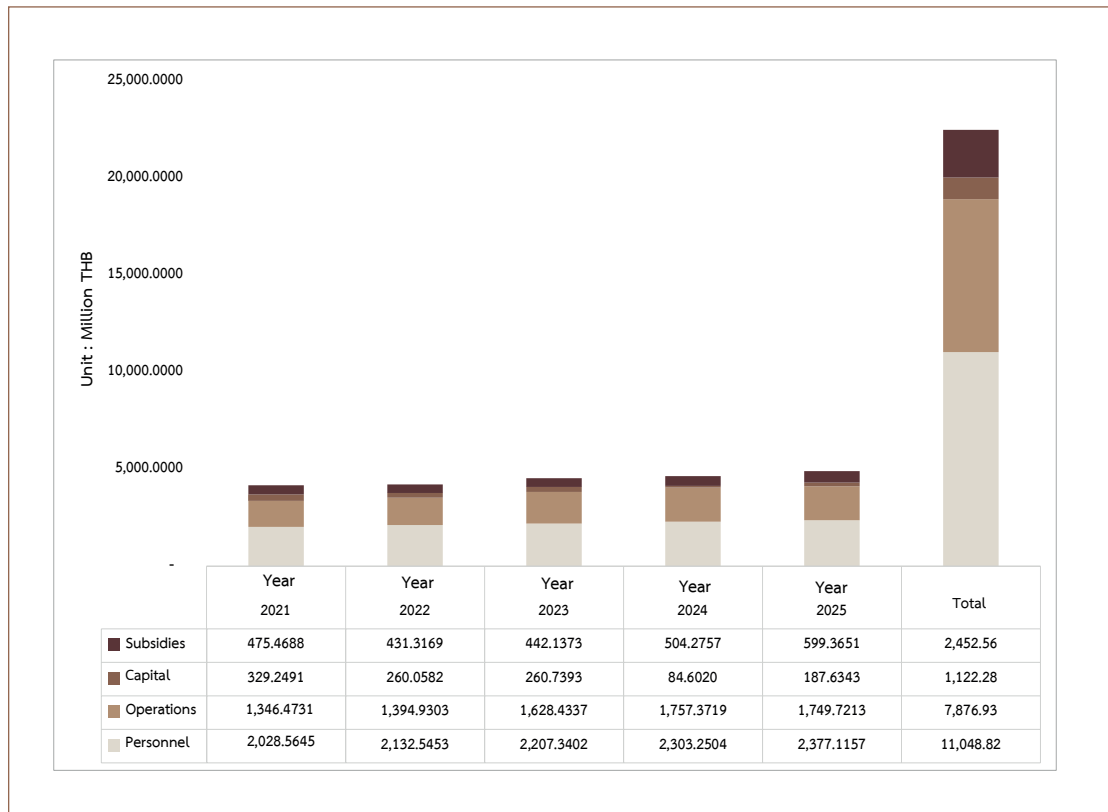


Notes:

1. Government budget excludes deposit funds, proxy budget withdrawals, central budget, and loan sources.
2. University staff wages under the government budget are consolidated under the personnel budget.
3. University revenue excludes deposit funds, reserve funds, donations, payables, and deferred income.

Over the five-year period from 2021 to 2025, the University revenue showed a strong growth of 39.09% in total, averaging approximately 9.77% per year, while the Government budget grew only 2.38% over the same period (averaging 0.60% per year). This trend reflects the university’s increasing financial self-reliance.

Budget Proportion Spent by the University for Overall University Administration, Classified by Expenditure Type, Fiscal Years 2021–2025

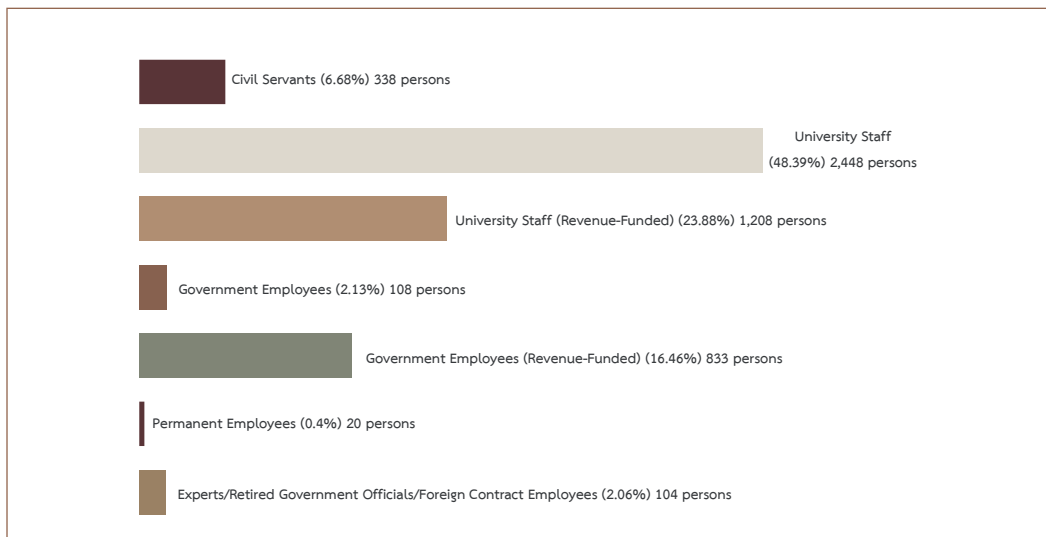


Personnel costs represent the largest expenditure share at 49.10%, followed by operations at 35.01%, with capital investment and subsidies making up the remaining 15.89%.

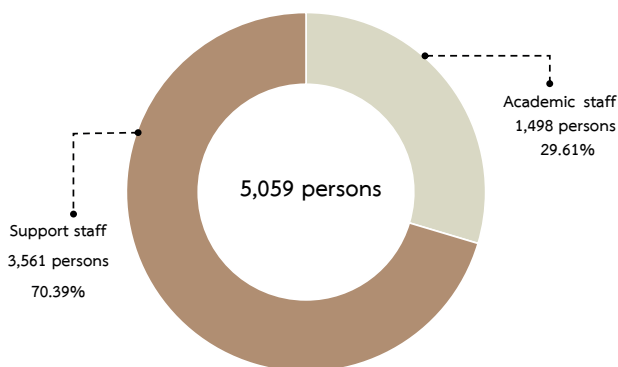
Personnel

As of fiscal year 2025, Naresuan University has 5,059 staff members, comprising 1,498 academic staff (29.61%) and 3,561 support staff (70.39%). The ratio of academic to support staff is 1 : 2.37

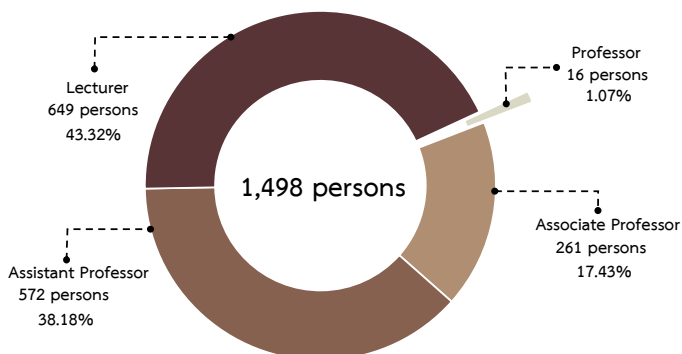
Proportion of Naresuan University Personnel, Classified by Personnel Type, Fiscal Year 2025



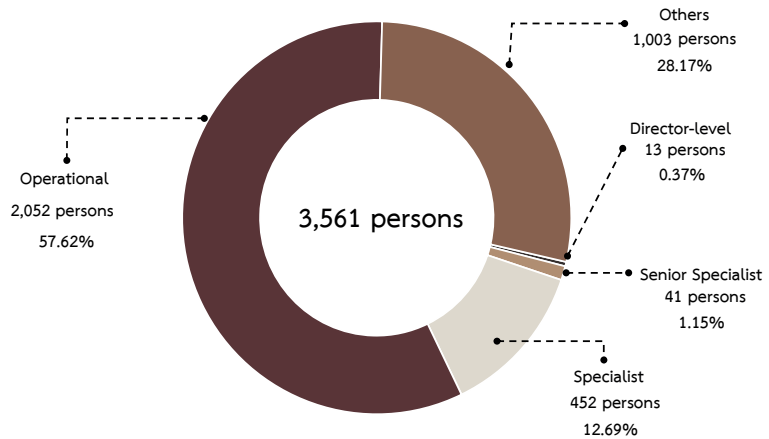
Proportion of Personnel Types at Naresuan University, Fiscal Year 2025



Proportion of Academic Staff Types at Naresuan University, Fiscal Year 2025



Proportion of Support Staff by Position Level, Classified by Position Level, Fiscal Year 2025



Efficient Organizational Management, Elevating and Developing the Organization towards Excellence

1) Development towards Internationalization

Naresuan University participates in global university rankings including QS, THE, and UI GreenMetric, with particular emphasis on sustainability and SDGs achievements. The university has been awarded a 5-Star Health Promoting University status under the AUN-HPN network. Key achievements in 2025 include

- Top 200 worldwide in UI GreenMetric (Environment and Sustainability), ranked 1-199 globally
- Sustainability score increased continuously from 7,430 to 8,387.5 points
- Academic quality score growing year-over-year: 52.2 to 56.4 to 64.8 and 71.9

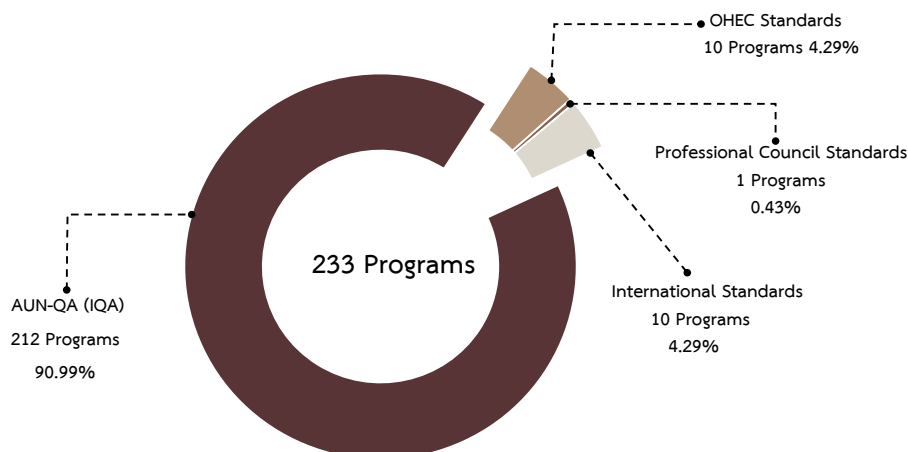


2) Quality Assurance

In academic year 2024, internal quality assessments were conducted for 233 programs: 83 Bachelor’s programs, 3 Graduate Certificate programs, 85 Master’s programs, and 62 Doctoral programs.

Proportion of Programs Meeting Educational Quality Assurance Criteria, at the Program Level,

Academic Year 2024



3) Quality Assurance Using the Education Criteria for Performance Excellence (EdPEX)

Under the EdPEX (Education Criteria for Performance Excellence) framework, the university scored 344.75 points in academic year 2024, up from 302 points in academic year 2023, reflecting continuous quality improvement across all dimensions.

NARESUAN UNIVERSITY: Striving for Excellence – EdPEX 2024 Educational Quality Results

Internal quality assessment and operational excellence guided by the Education Criteria for Performance Excellence (EdPEX).

RESULTS TOWARDS EXCELLENCE

Year	Score
2023	302 Points
2024	344.75 Points

SIGNIFICANT YEAR-ON-YEAR GROWTH

VERIFIED BY EXTERNAL EXPERTS

DISTINGUISHED ASSESSMENT PANEL

Assoc. Prof. Dr. Anant Mungwattana
Assoc. Prof. Dr. Wichian Chutimaskul
Asst. Prof. Dr. Sakda Warasawapati
Dr. Lerasak Triratanapaiboon.

The evaluation was performed by external specialists representing the:

TQA Thailand Quality Award (TQA) and
Office of the Permanent Secretary,
Ministry of Higher Education,
Science, Research and Innovation
(MHESI)

QUALITY DEVELOPMENT IN EVERY DIMENSION

Increased score reflects success in driving quality and performance across all organizational aspects.

มหาวิทยาลัยนเรศวร

**NARESUAN
UNIVERSITY**

